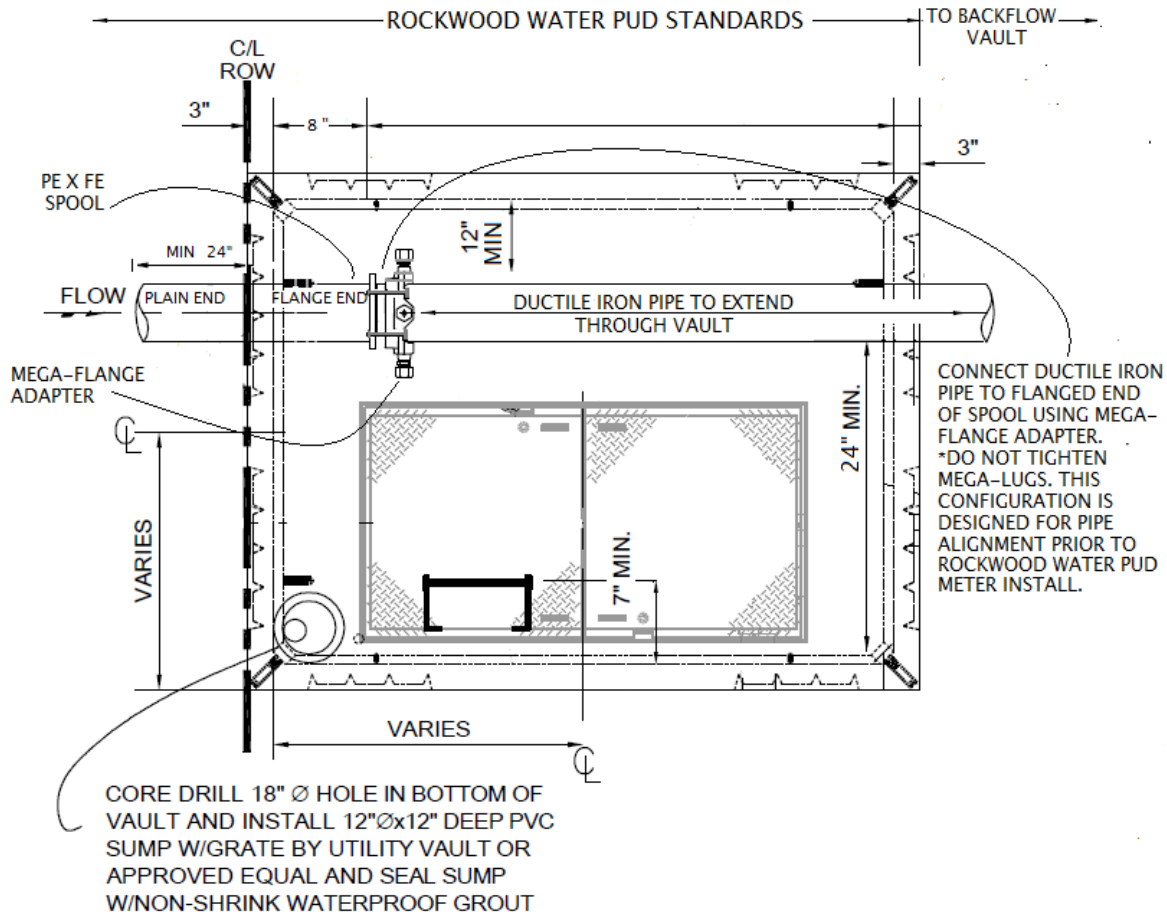


NOTES:

LARGE METER VAULT	
SIZE	VAULT
3	575LA w/ cntr offset 57-T-2-332P Lid
4	676LA w/ cntr offset 676-1-T-2-332P LID
6	687LA w/ cntr offset 687-T-2-332P LID

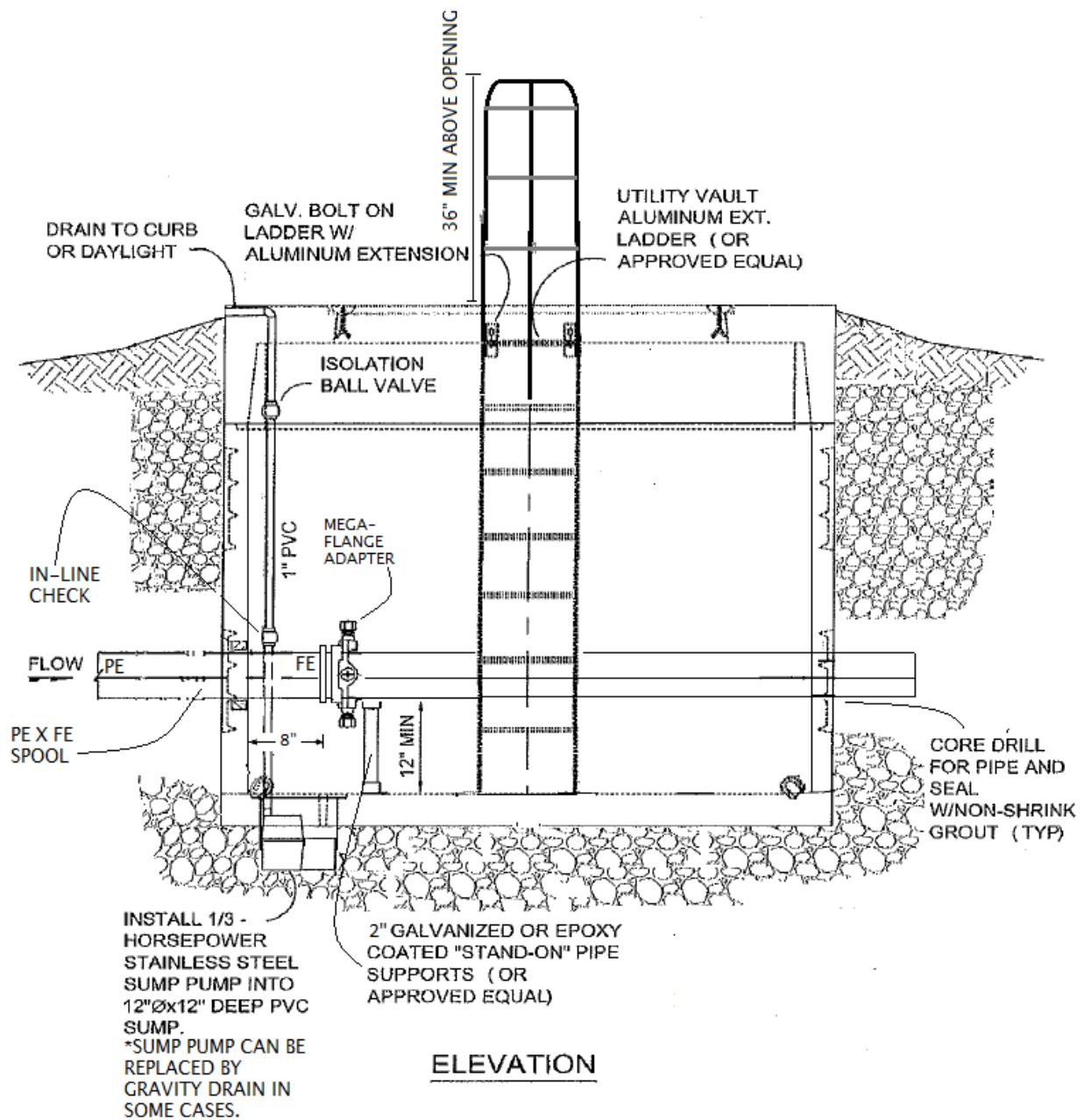
* VAULT LIDS SHALL BE DOUBLE DOOR CENTER OFF-SET UNLESS A TRAFFIC RATING IS REQUIRED. PLEASE CONTACT RWPUD FOR DETAILS.

1. CONTRACTOR TO SEAL ALL OPENINGS IN VAULT WITH NON-SHRINK GROUT.
2. CONTRACTOR TO INSTALL CONCRETE BALLAST 3 CU YDS MIN. AROUND BASE OF VAULT WHERE FLOODING OR HIGH GROUND WATER EXIST.
3. CLEARANCE BETWEEN WALL AND SPOOL FLANGE TO BE 8 INCHES
4. COAT ALL OUTSIDE CONC SURFACES OF VAULT W/CRYSTAL SEAL OR APPROVED EQUAL
5. DO NOT TIGHTEN RESTRAINT BOLTS ON FLANGE ADAPTER.
6. WHEN A SERVICE IS A COMBINATION DOMESTIC/FIRE SERVICE ADDITIONAL FIRE DEPARTMENT REQUIREMENTS MAY APPLY.



LARGE DOMESTIC METER VAULT

DRAWN N.T.S
DATE 2015
APPR.
DWG. NO. SD-17



LARGE METER VAULT

SCALE	N.T.S.
DATE	2015
APPR.	
DWG. NO.	SD-17B



Rockwood Water
People's Utility District

19601 NE Halsey Street
Portland, OR 97230-7430
503-665-4179 - Phone
503-667-5108 - Fax
www.rwpud.org

Large Meter Vault/Enclosure Specifications to be used with SD-17

- All large water meter services require *pre-construction* plan review. Please submit a set of plans to Rockwood Water PUD for review before construction.
- Large Meters 3 inches and larger are required to be installed in a utility vault at the property line.
- Only pre-cast vaults (Utility Vault or equivalent) that accommodate the installation criteria will be accepted.
- Large Meters shall not be installed in locations subject to continuous immersion. All enclosures must be provided with adequate drainage.
- Drains or sump pumps may not be connected directly to sewers or catch basins.
- Large meter vaults are required to be installed directly adjacent to the premises isolating backflow enclosure at the property line.
- All large meter services require backflow protection at the property line.
- Large Meter Vault sizing to correspond with SD-17 clearances:

Meter Sizing Chart		
Size	Vault	Lid
3"	575LA	57-T-2-332P Center Offset
4"	676LA	676-1-T-2-332P Center Offset
6"	687LA	687-T-2-332P Center Offset

- Vault lid shall be Utility Vault or equivalent. When available use Center-Offset frame and cover lids to allow for necessary ladder clearances.
- A (Utility Vault Pull-Up Extension or equivalent) rigidly mounted galvanized ladder with aluminum extension to extend no less than 3' above the vault lid is required if the vault or chamber is 4' or greater in depth. The ladder shall be mounted vertically in the entryway of the vault or chamber and be securely anchored at top and bottom. The top and bottom rungs must be within 12" of the opening and floor, respectively. All rungs must have at least 7" of toe clearance. The ladder shall not infringe on the installation clearances of the large meter (SD-17).
- A moisture-proof light fixture will be required if adequate lighting is not available.
- At least 6' of vertical headroom is required in all vaults, and/or below grade installations. Full opening double doors can be used to obtain the 6' requirement but must encompass the entire lay-length of the meter and must not encroach on required ladder clearances.
- All pipe and conduit openings shall be sealed water tight with non-shrink grout.
- All large meter vaults and enclosures shall be kept free of any debris, objects that interfere with these installation requirements.
- Vaults and enclosures shall not contain loose fill materials of any kind.
- Coat all outside concrete surfaces with Crystal Seal or approved equal